

# Supplementary File: Additional Examples

(PAPER ID: 912)

Performance comparison on another typical image from test set



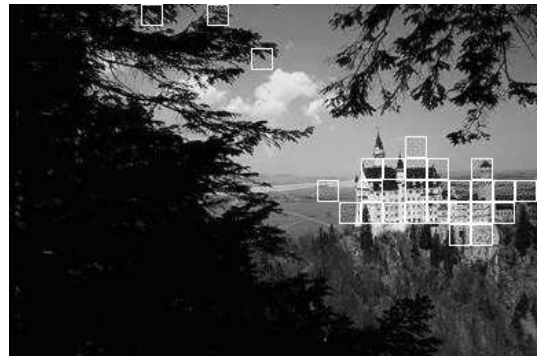
(a) Input image



(b) MSRF Result



(c) *Structured* posterior map using MSRF



(d) GMM result

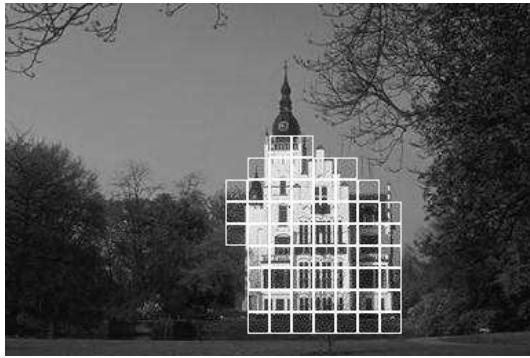
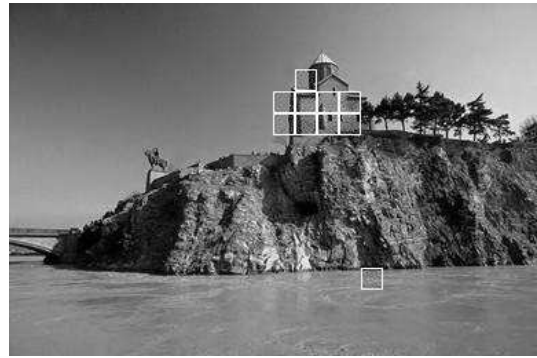
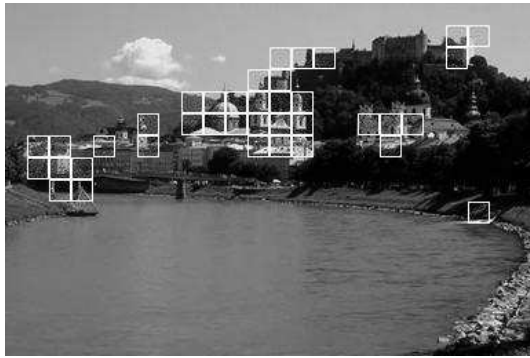
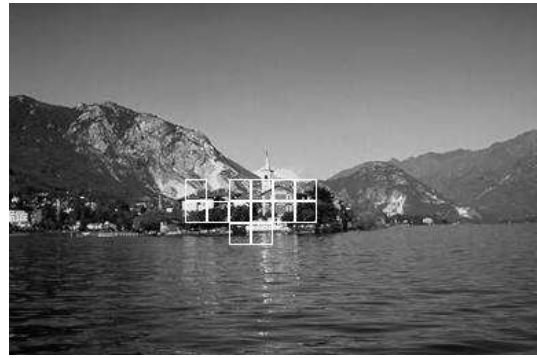
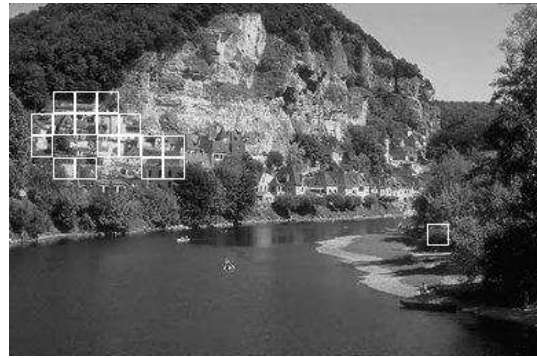


(e) SC result

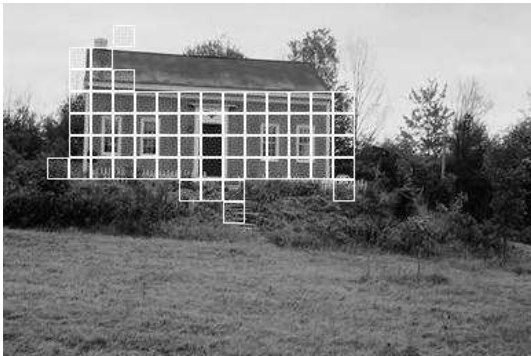
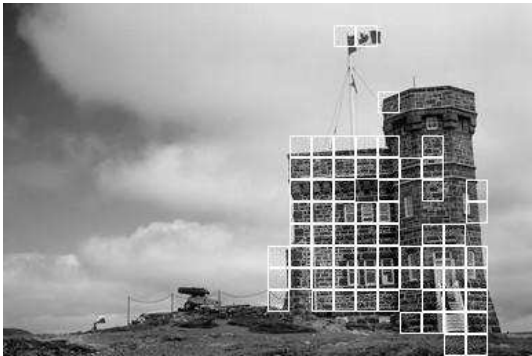
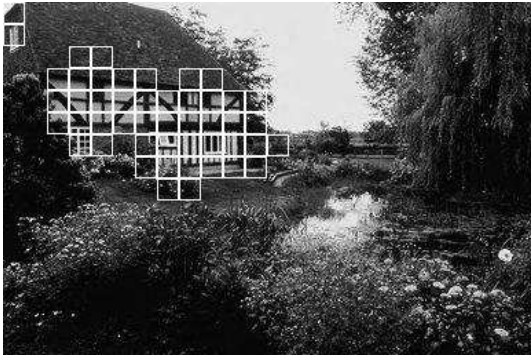
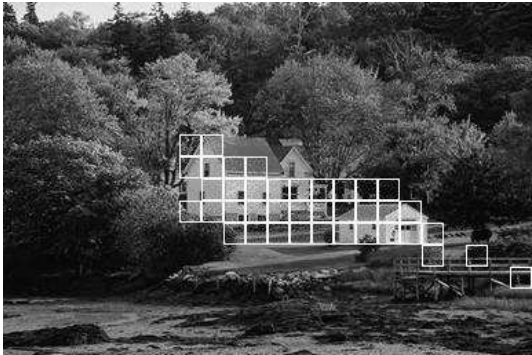
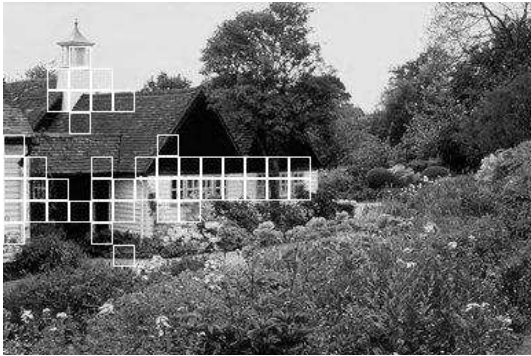
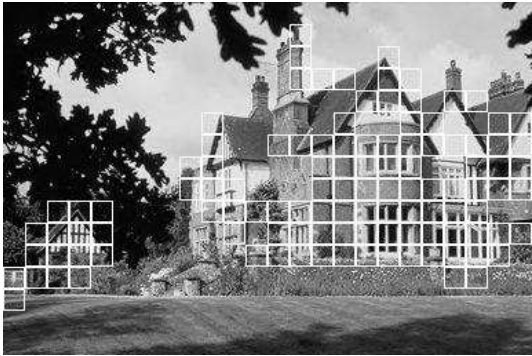


(f) SVM result

## Additional examples of MSRF based structure detection



More examples: Images with low detection rate for smooth structured regions and low false positive rate for edgy nonstructured regions



# More examples of MSRF based structure detection

